

# **IsoTech ehf.**

Have manufactured Actuators for Trim Tabs since 1997. They are made of high quality AISI 316 grade stainless steel and fullfills the IP68 Standard for dust and watertightness.

The actuators have proven to be reliable and durable in North Atlantic sea waters.

# **IsoTech ehf.**

Dalshraun 9  
220 Hafnarfjordur  
Iceland

tel. +354 555 6200  
fax. +354 555 6201  
isotech@isotech.is  
www.isotech.is

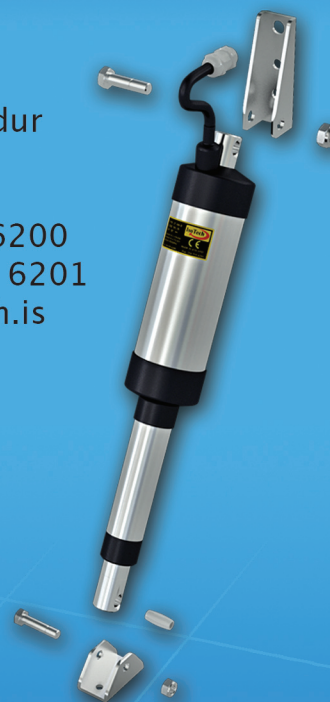
Patented  
Patent No.  
2 370 030,  
6 772 653.

# **ELECTRICAL TRIM TAB ACTUATORS**

**Super Trim Control**  
**Higher speed**  
**Lower fuel consumption**

For small to Large vessel  
and racing application

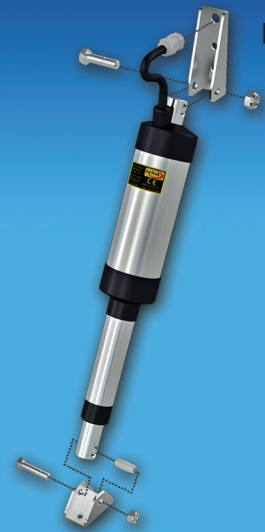
**Stainless Steel**





# Installation

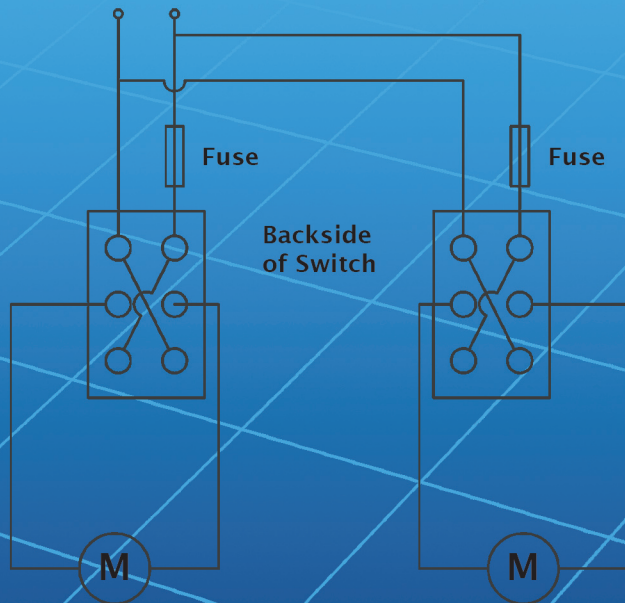
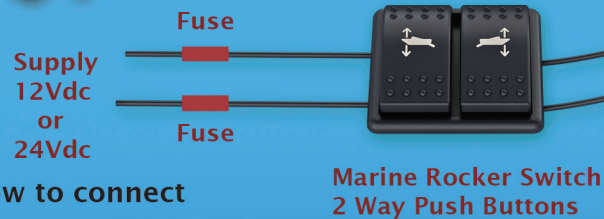
How to assemble actuators



Option



Position Indicator



Electrical Actuators

24Vdc, 10A Fuse  
12Vdc, 20A Fuse

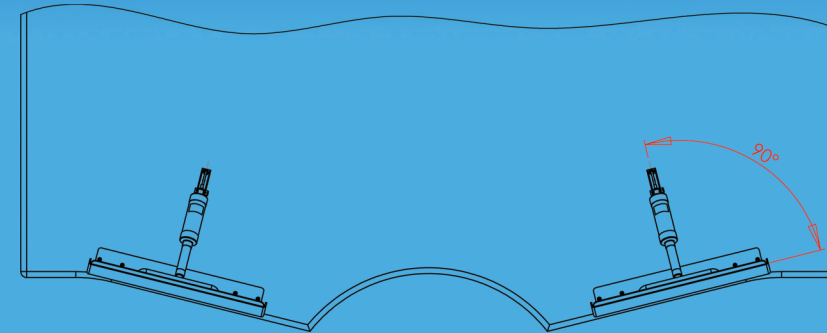
The **IsoTech** actuator is designed to be the best Electric Actuator for Trim Tabs on the market. Special emphasis on strength, high resistance surface, environment and durability. It is made of high quality AISI 316 stainless steel.

The superior mechanical design enables self lock in up and down position.

12 Vdc and 24 Vdc.

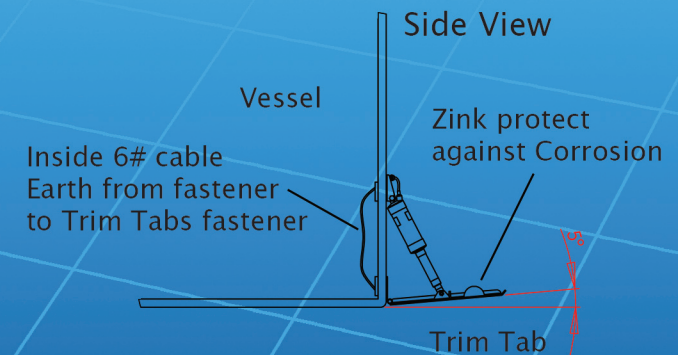
**Patented.**

Patent No. 2 370 030,  
6 772 653



Aft View

Actuators should be in 90° angle to Trim Tabs.



Trim Tabs in 5° angle above bottom line when Actuators are in fully retracted position.



IsoTech ehf.  
Dalshraun 9  
220 Hafnarfjörður  
Iceland

Made in Iceland



tel. +354 555 6200  
fax. +354 555 6201  
isotech@isotech.is  
www.isotech.is