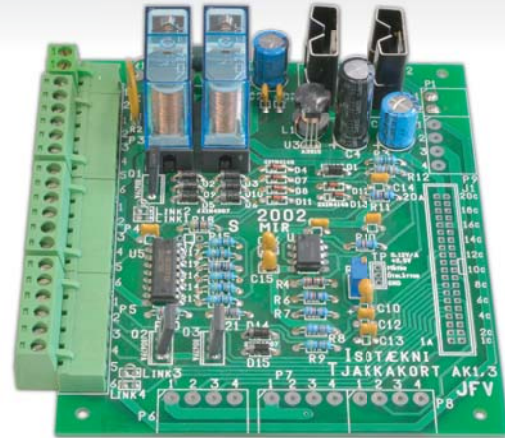


Control for Actuator AK1,3

manual controlling and/or [PLC]

EL-Actuator: IT 100 R
Voltage, U 24 Vdc
Current, I_{max} 6 AMP



Function: Actuator runs when connected [**Connection P4**]

Adjustable max load (preadjusted and tested by Isotech before delivery). When end position is reached there is an option to have signal or light in both end positions [**Connection P5**].

